
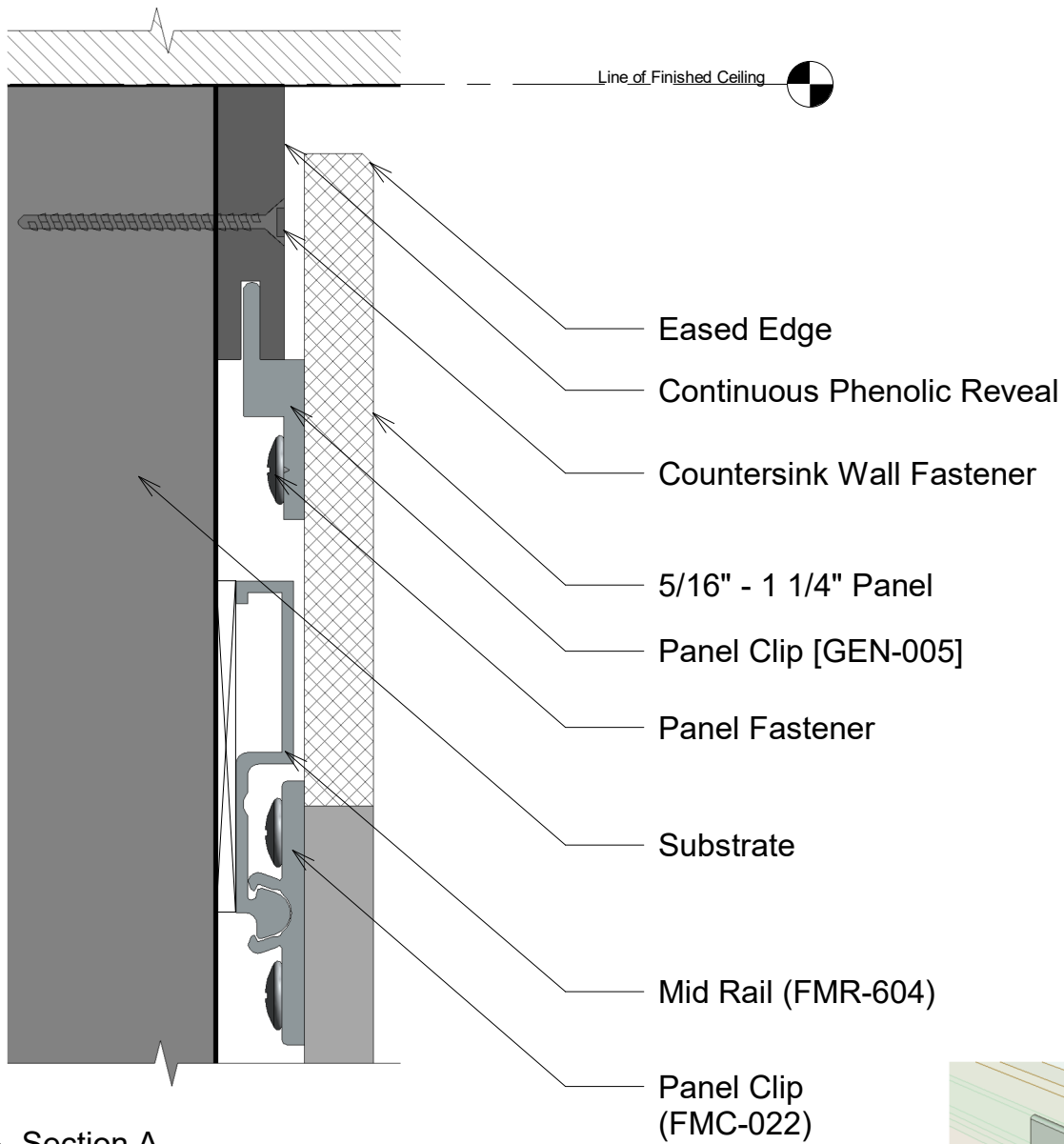
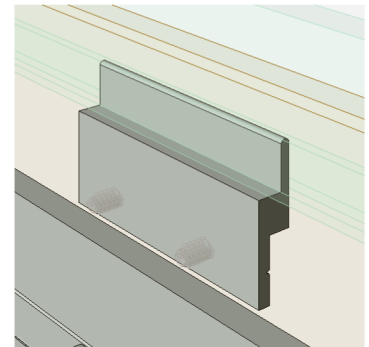



Title:		View:		Date:		 <b>WPS</b> Wall Panel System, Inc. Tel: 877-333-4WPS support@wpsusa.com Web: www.wpsusa.com © 2007 Wall Panel Systems Inc.
Installation Instruction 3-D Model		3D		03/18/22		
Detail:	System Type:	Scale:	Drawn By:			
0	Recessed Reveal System	N/A	WPS, Inc.			

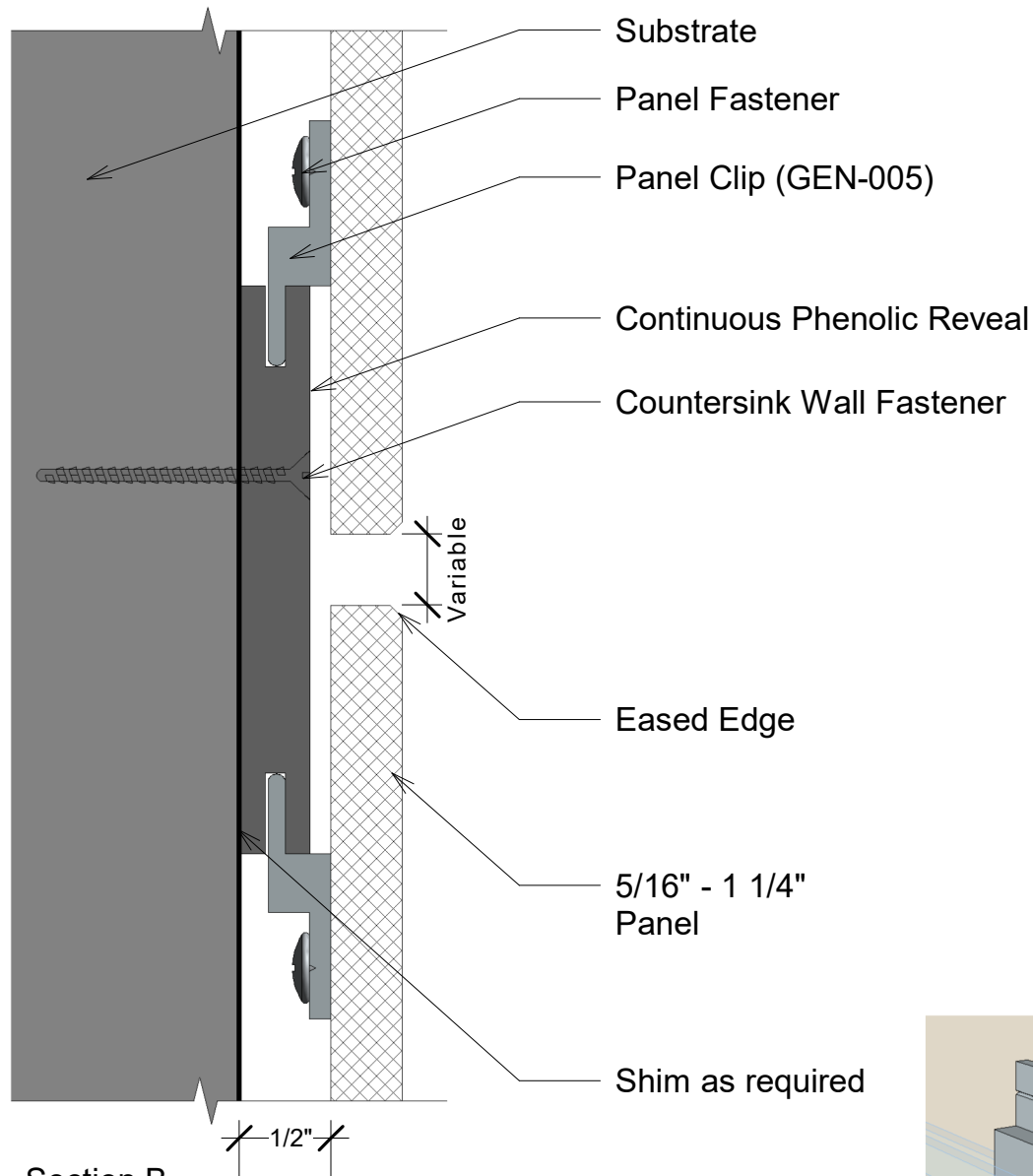


1 Section A  
12" = 1'-0"

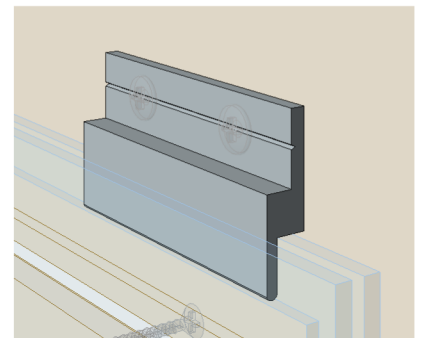


2 GEN-005 (A)  
Panel Clip


Title: <b>Top Edge</b>		View: <b>Section</b>	Date: <b>03/17/22</b>	 <b>Wall Panel Systems, Inc.</b> Tel: 877-333-4WPS support@wallpanelsystems.net Web: www.wallpanelsystems.net © 2010 Wall Panel Systems Inc.
Detail: <b>A</b>	System Type: <b>Recessed Reveal Syst. Phenolic</b>	Scale: <b>Full</b>	Draw By: <b>WPS, Inc.</b>	

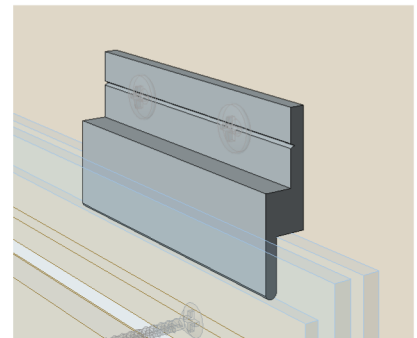
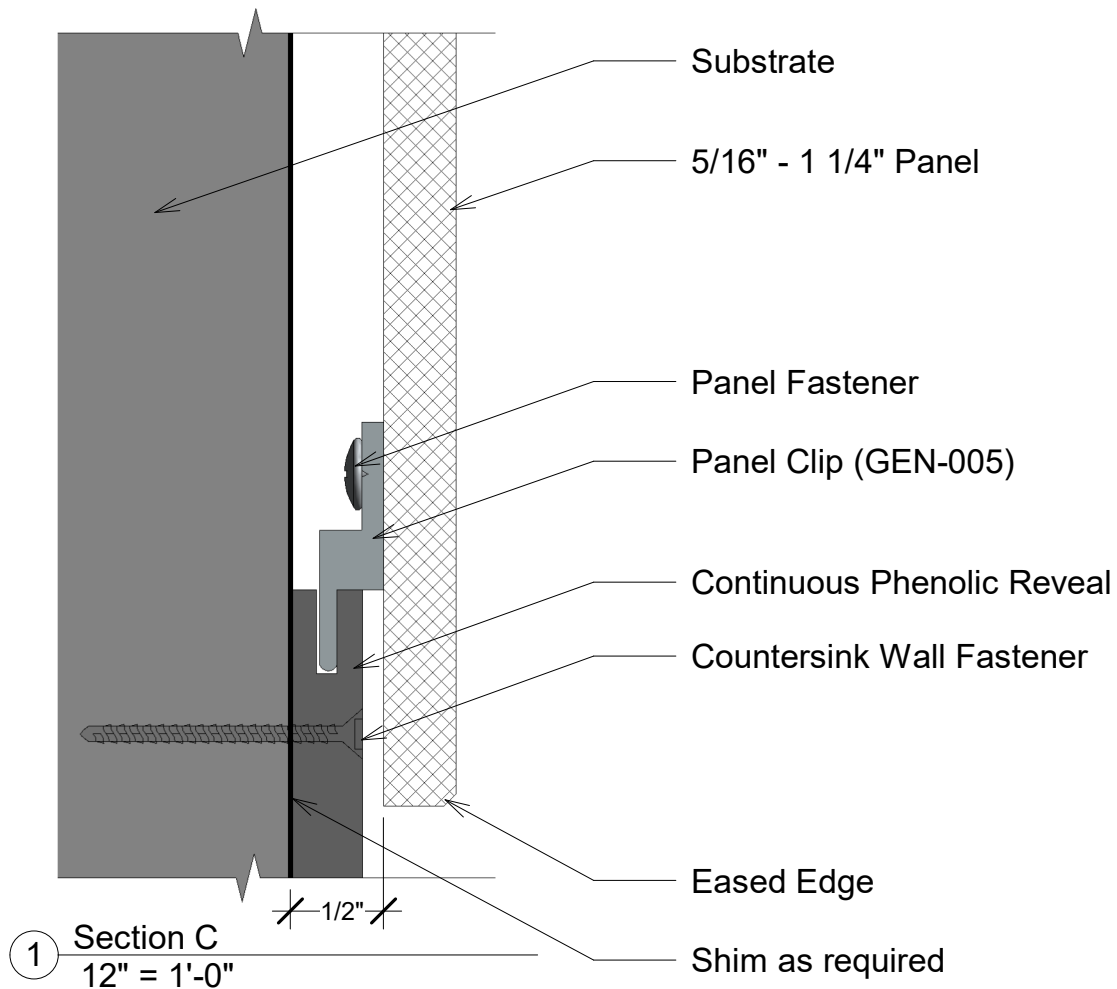


1 Section B  
12" = 1'-0"




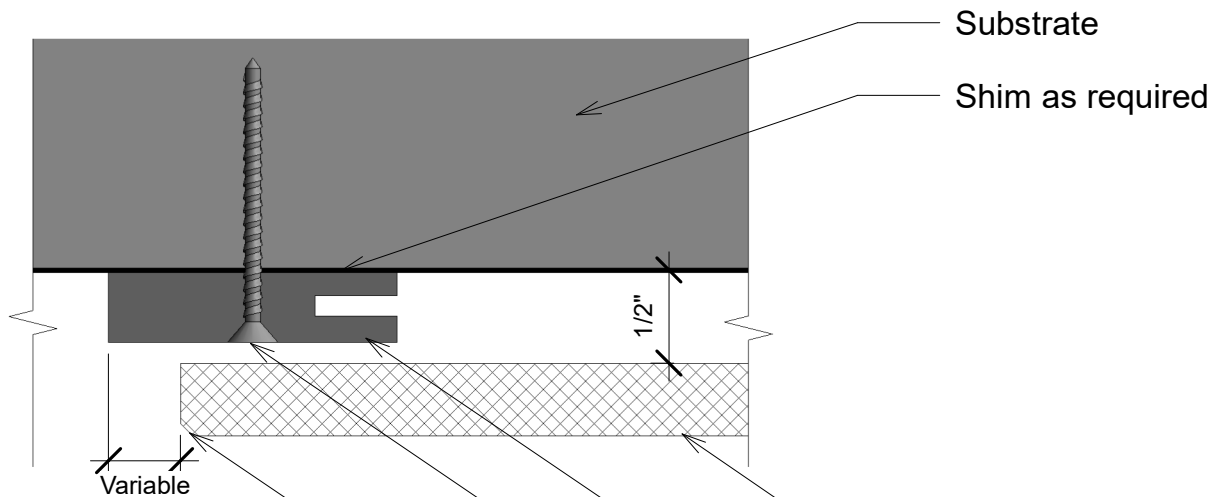
2 GEN-005 (B)  
Panel Clip

Title: <b>Horizontal Joint</b>		View: <b>Section</b>	Date: <b>03/17/22</b>	 <b>Wall Panel Systems, Inc.</b> Tel: 877-333-4WPS support@wallpanelsystems.net Web: www.wallpanelsystems.net © 2010 Wall Panel Systems Inc.
Detail: <b>B</b>	System Type: <b>Recessed Reveal Syst. Phenolic</b>	Scale: <b>Full</b>	Draw By: <b>WPS, Inc.</b>	



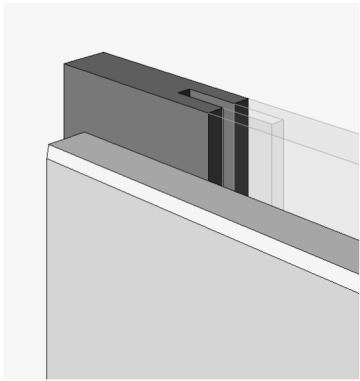
2 GEN-005 (C)  
 Panel Clip

Title:		View:	Date:	 <b>Wall Panel Systems, Inc.</b> Tel: 877-333-4WPS support@wallpanelsystems.net Web: www.wallpanelsystems.net © 2010 Wall Panel Systems Inc.
Base Edge		Section	03/17/22	
Detail:	System Type:	Scale:	Draw By:	
C	Recessed Reveal Syst. Phenolic	Full	WPS, Inc.	




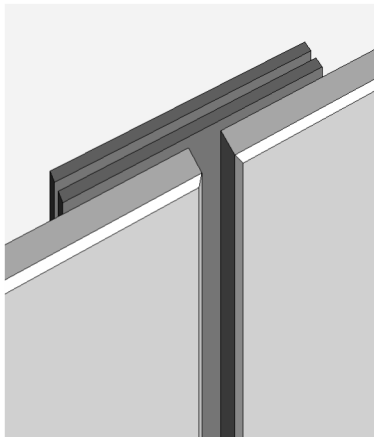
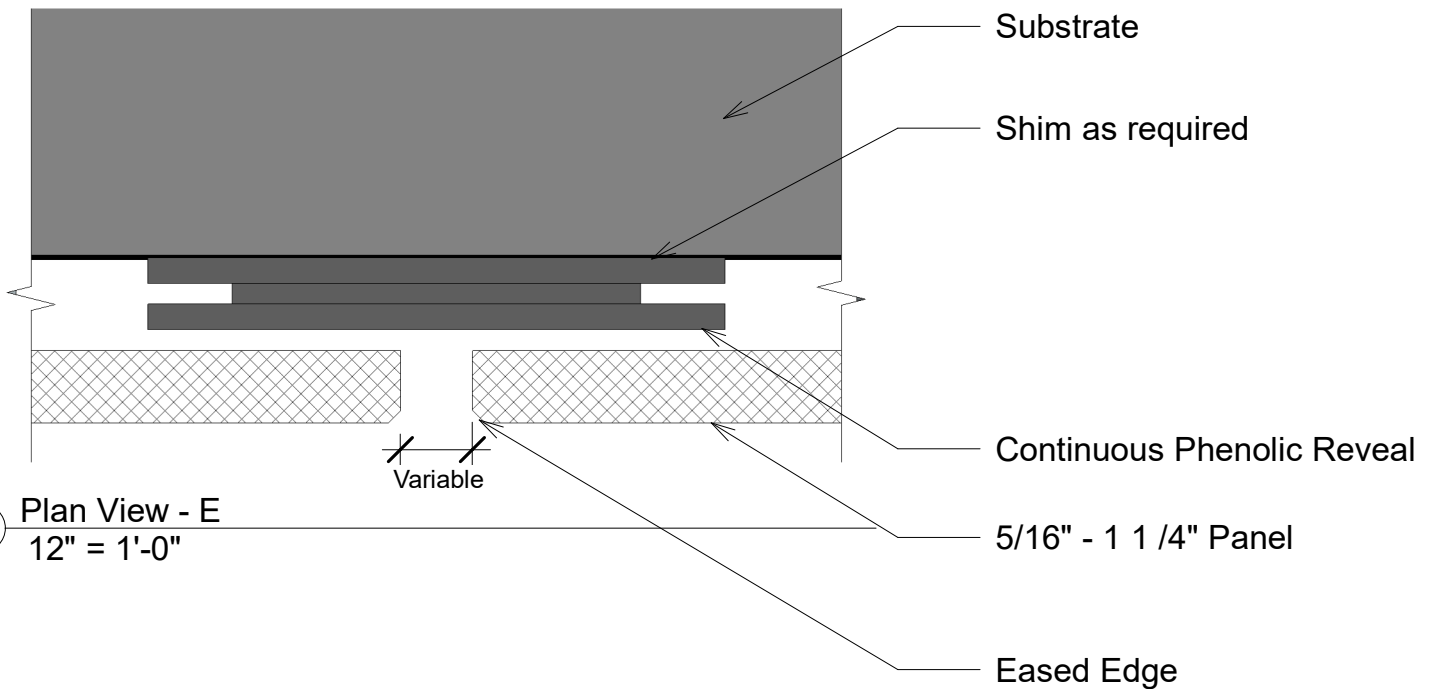
① Plan View - D  
12" = 1'-0"

- Substrate
- Shim as required
- 5/16" - 1 1/4" Panel
- Continuous Phenolic Reveal
- Countersink Wall Fastener
- Eased Edge




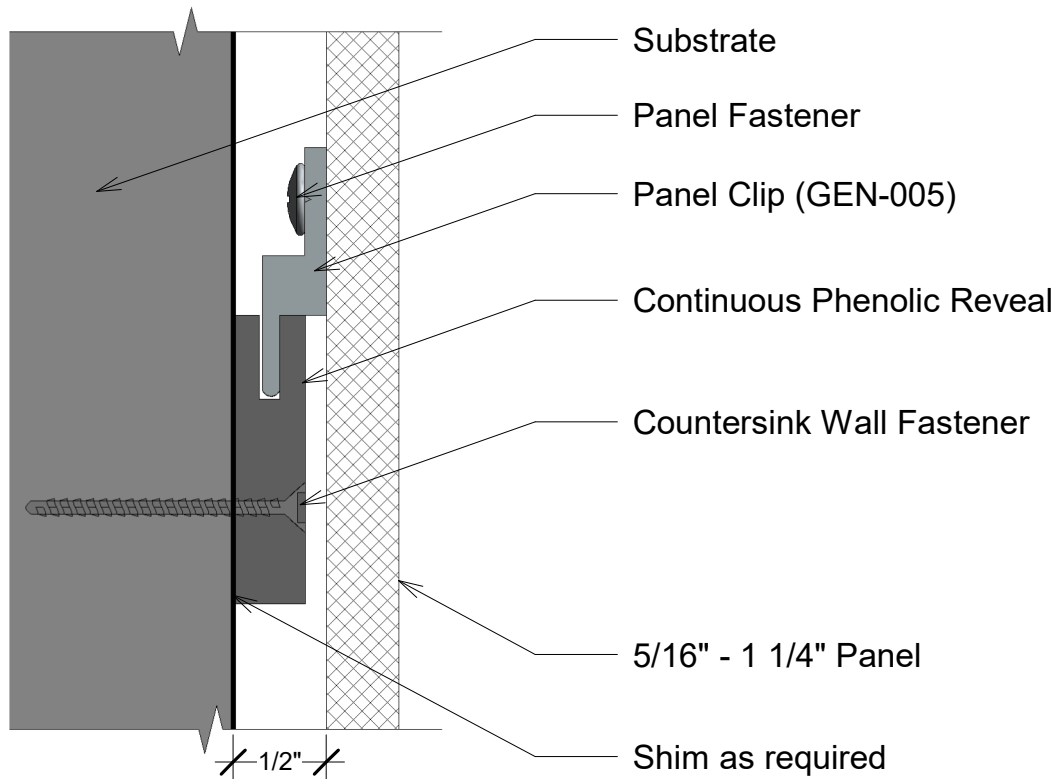
② 3D (D)  
Vertical Edge

Title: <b>Vertical Edge</b>		View: <b>Plan</b>	Date: <b>03/17/22</b>	 <b>Wall Panel Systems, Inc.</b> Tel: 877-333-4WPS support@wallpanelsystems.net Web: www.wallpanelsystems.net © 2010 Wall Panel Systems Inc.
Detail: <b>D</b>	System Type: <b>Recessed Reveal Syst. Phenolic</b>	Scale: <b>Full</b>	Draw By: <b>WPS, Inc.</b>	

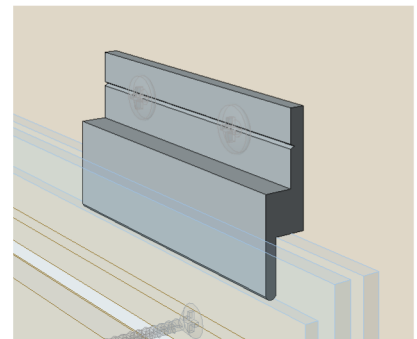


② 3D (E)  
Vertical Joint


Title: <b>Vertical Joint</b>		View: <b>Plan</b>	Date: <b>03/17/22</b>	 <b>Wall Panel Systems, Inc.</b> Tel: 877-333-4WPS support@wallpanelsystems.net Web: www.wallpanelsystems.net © 2010 Wall Panel Systems Inc.
Detail: <b>E</b>	System Type: <b>Recessed Reveal Syst. Phenolic</b>	Scale: <b>Full</b>	Draw By: <b>WPS, Inc.</b>	

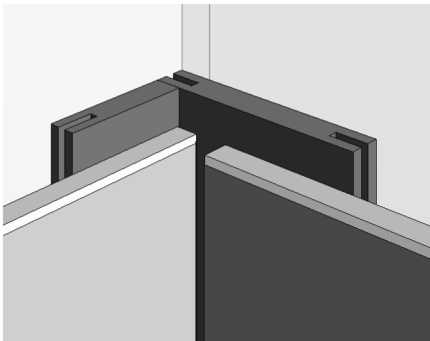
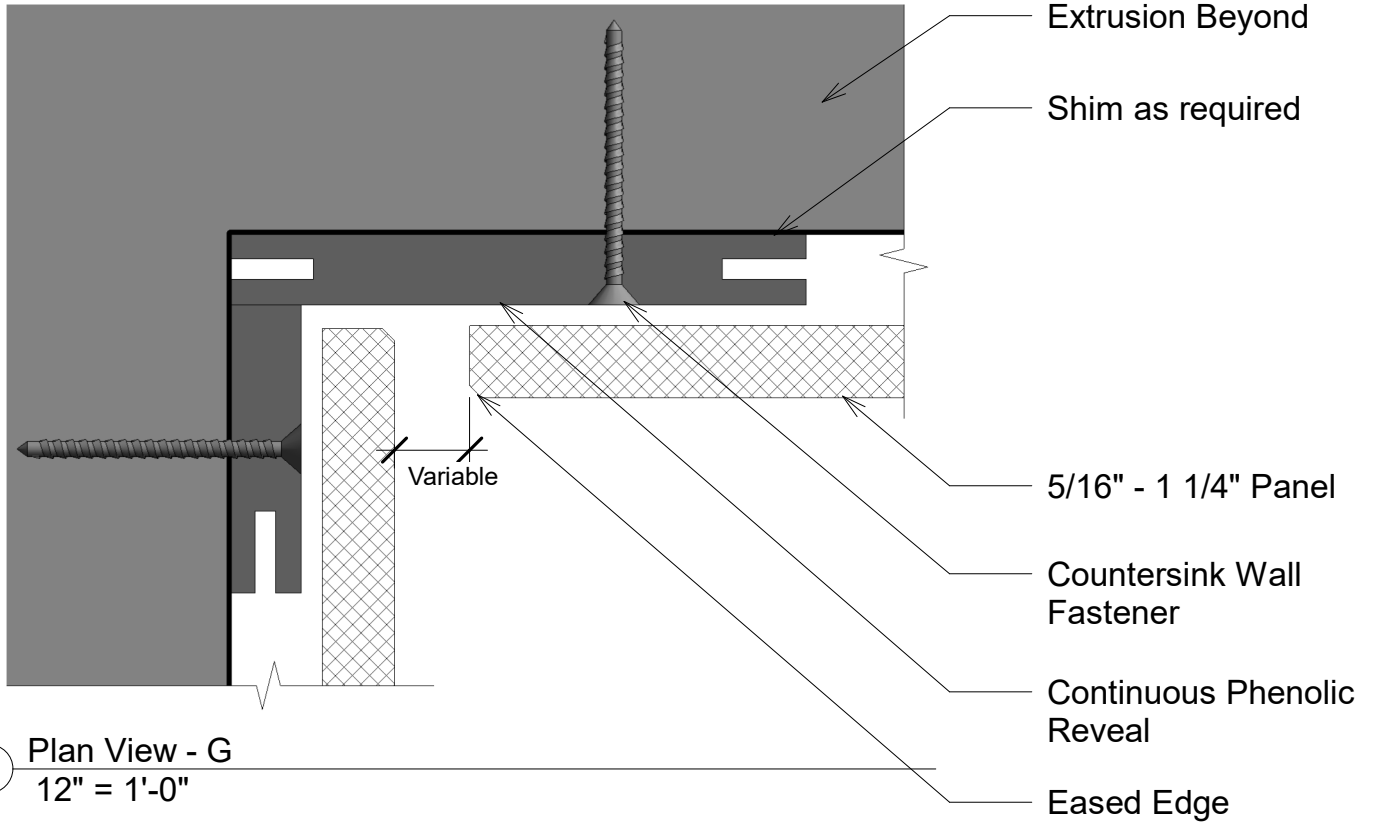


1 Section F  
12" = 1'-0"




2 GEN-005 (F)  
Panel Clip

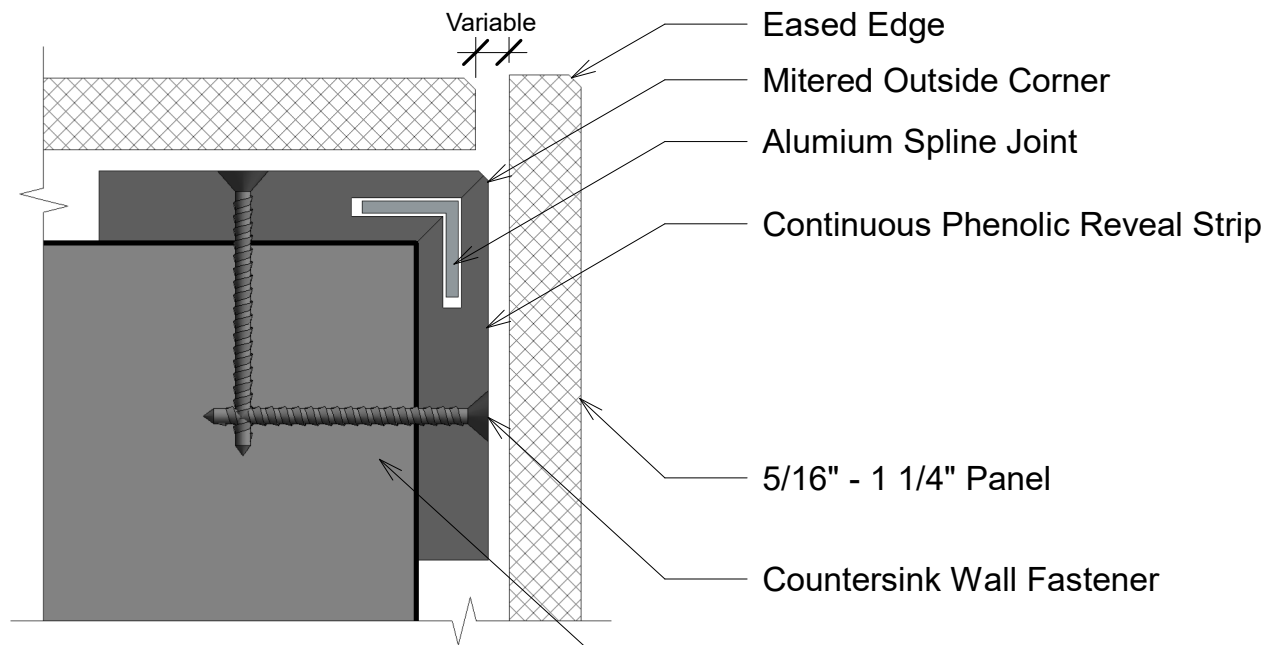
Title: <b>Mid-Wall Rail / Clip</b>		View: <b>Section</b>	Date: <b>03/17/22</b>	 <b>Wall Panel Systems, Inc.</b> Tel: 877-333-4WPS support@wallpanelsystems.net Web: www.wallpanelsystems.net © 2010 Wall Panel Systems Inc.
Detail: <b>F</b>	System Type: <b>Recessed Reveal Syst. Phenolic</b>	Scale: <b>Full</b>	Draw By: <b>WPS, Inc.</b>	



② 3D (G)  
Inside Corner

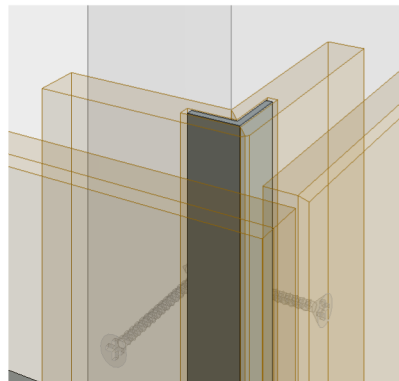
Title: <b>Inside Corner</b>		View: <b>Plan</b>	Date: <b>03/17/22</b>	 <b>Wall Panel Systems, Inc.</b> Tel: 877-333-4WPS support@wallpanelsystems.net Web: www.wallpanelsystems.net © 2010 Wall Panel Systems Inc.
Detail: <b>G</b>	System Type: <b>Recessed Reveal Syst. Phenolic</b>	Scale: <b>Full</b>	Draw By: <b>WPS, Inc.</b>	






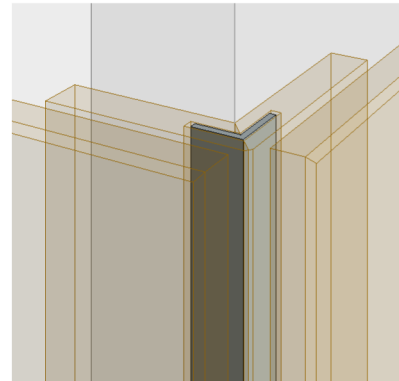
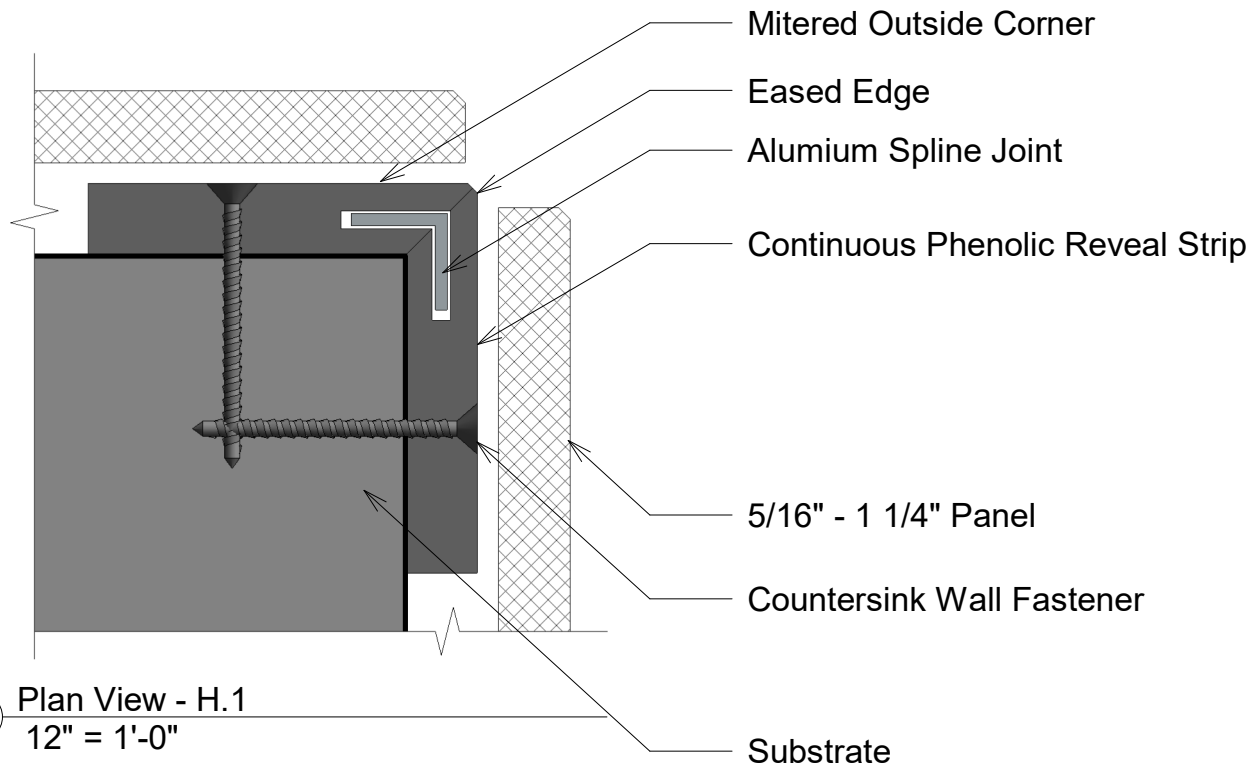
① Plan View - H  
12" = 1'-0"

- Variable
- Eased Edge
- Mitered Outside Corner
- Alumium Spline Joint
- Continuous Phenolic Reveal Strip
- 5/16" - 1 1/4" Panel
- Countersink Wall Fastener
- Substrate




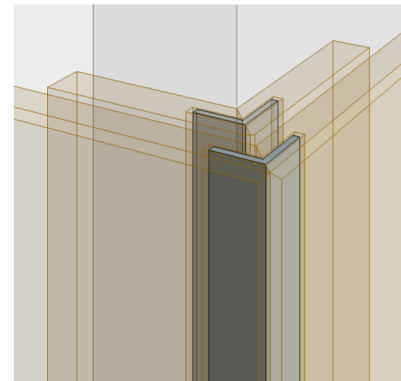
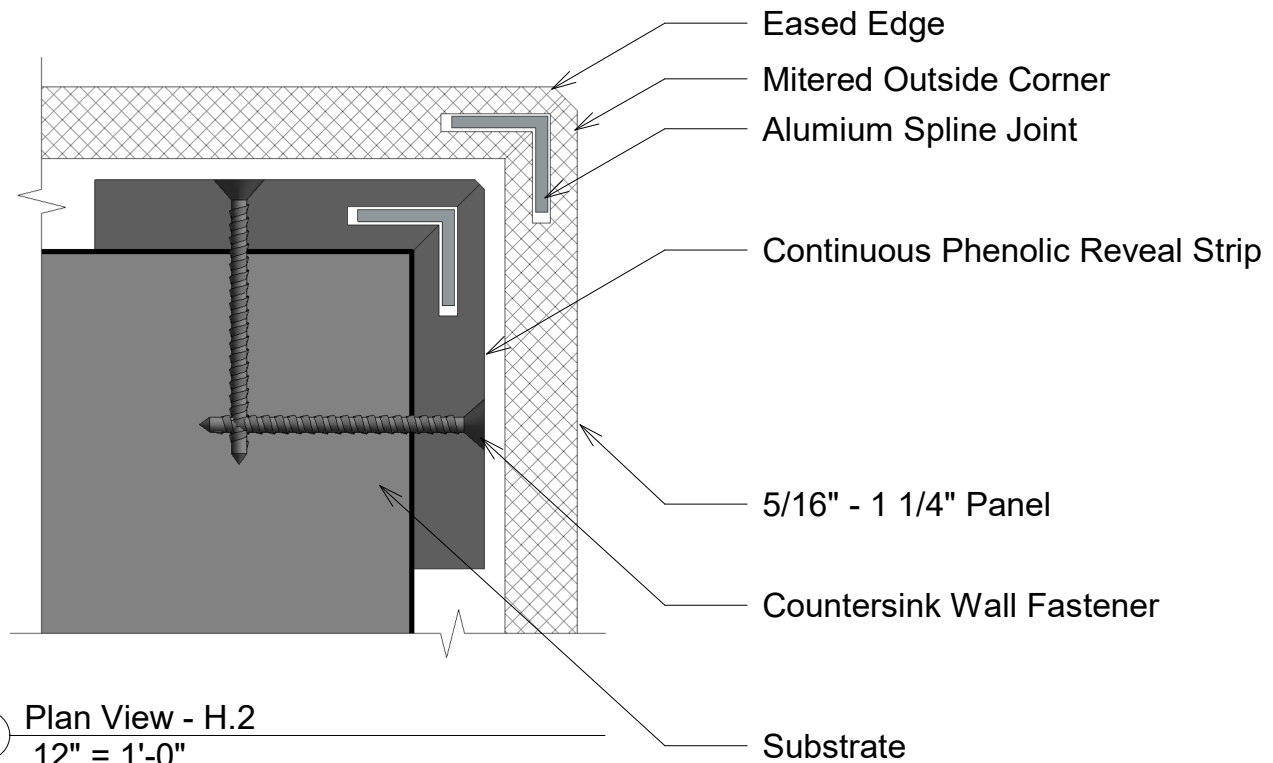
② Alumium Spline Joint (H)

Title: <b>Outside Corner Option</b>		View: <b>Plan</b>	Date: <b>03/17/22</b>	 <b>Wall Panel Systems, Inc.</b> Tel: 877-333-4WPS support@wallpanelsystems.net Web: www.wallpanelsystems.net © 2010 Wall Panel Systems Inc.
Detail: <b>H</b>	System Type: <b>Recessed Reveal Syst. Phenolic</b>	Scale: <b>Full</b>	Draw By: <b>WPS, Inc.</b>	




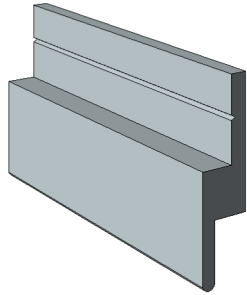
② Alumium Spline Joint (H.1)

Title: <b>Outside Corner Open</b>		View: <b>Plan</b>	Date: <b>03/17/22</b>	 <b>Wall Panel Systems, Inc.</b> Tel: 877-333-4WPS support@wallpanelsystems.net Web: www.wallpanelsystems.net © 2010 Wall Panel Systems Inc.
Detail: <b>H.1</b>	System Type: <b>Recessed Reveal Syst. Phenolic</b>	Scale: <b>Full</b>	Draw By: <b>WPS, Inc.</b>	



② Alumium Spline Joint (H.2)

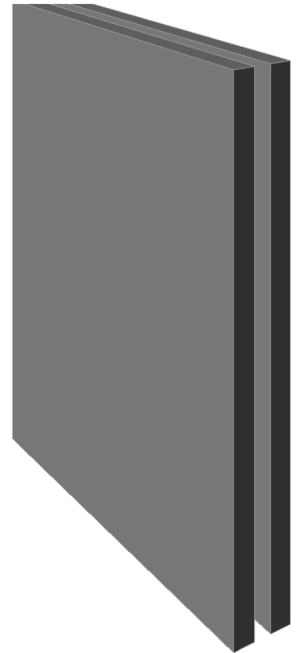
Title: <b>Outside Corner Miter</b>		View: <b>Plan</b>	Date: <b>03/17/22</b>	 <b>Wall Panel Systems, Inc.</b> Tel: 877-333-4WPS support@wallpanelsystems.net Web: www.wallpanelsystems.net © 2010 Wall Panel Systems Inc.
Detail: <b>H.2</b>	System Type: <b>Recessed Reveal Syst. Phenolic</b>	Scale: <b>Full</b>	Draw By: <b>WPS, Inc.</b>	



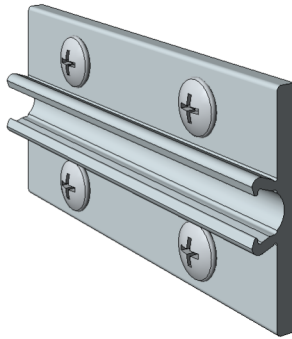
① GEN-005 (U)  
Panel Clip



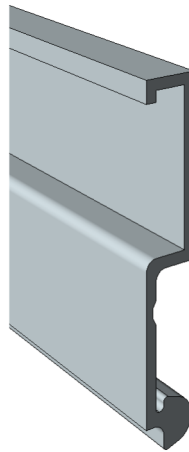
⑤ Phenolic Reveal (U)



④ Continuous Reveal (U)




③ FMC-022 (U)  
Panel Clip



⑥ FMR-604 (U)  
Mounting Rail



② Alumium Spline Joint (U)  
Panel Clip

Title:		View:	Date:	 <b>Wall Panel Systems, Inc.</b> Tel: 877-333-4WPS support@wallpanelsystems.net Web: www.wallpanelsystems.net © 2010 Wall Panel Systems Inc.
<b>Parts List</b>		<b>3D</b>	<b>03/17/22</b>	
Detail:	System Type:	Scale:	Draw By:	
<b>U</b>	<b>Recessed Reveal Syst. Phenolic</b>	<b>N/A</b>	<b>WPS, Inc.</b>	